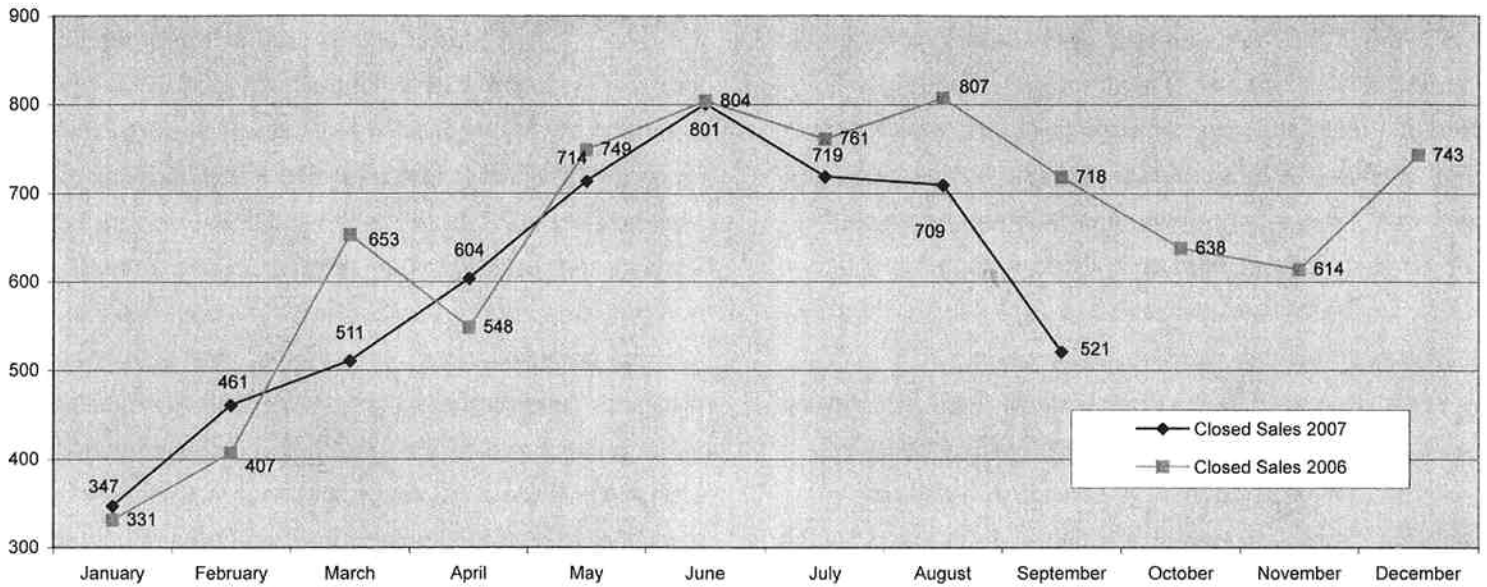


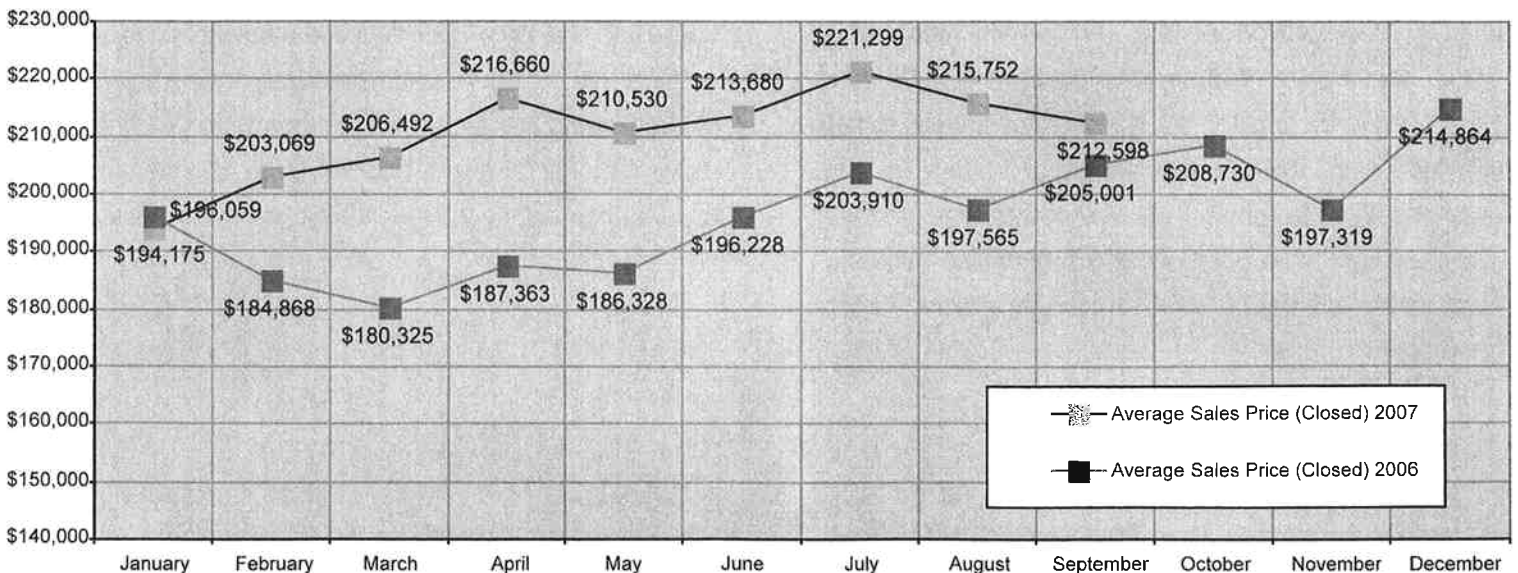
# Market Activity Reports - Spokane County Residential

This information comes from the monthly MLS Market Activity Reports which are found on SAR's website. The Market Activity (Residential site built and Condo in Spokane County on less than one acre) tracks the number of closed sales, average and median (half sell above the number, half below) sales prices and current listing activity on a monthly basis.

### Closed Sales



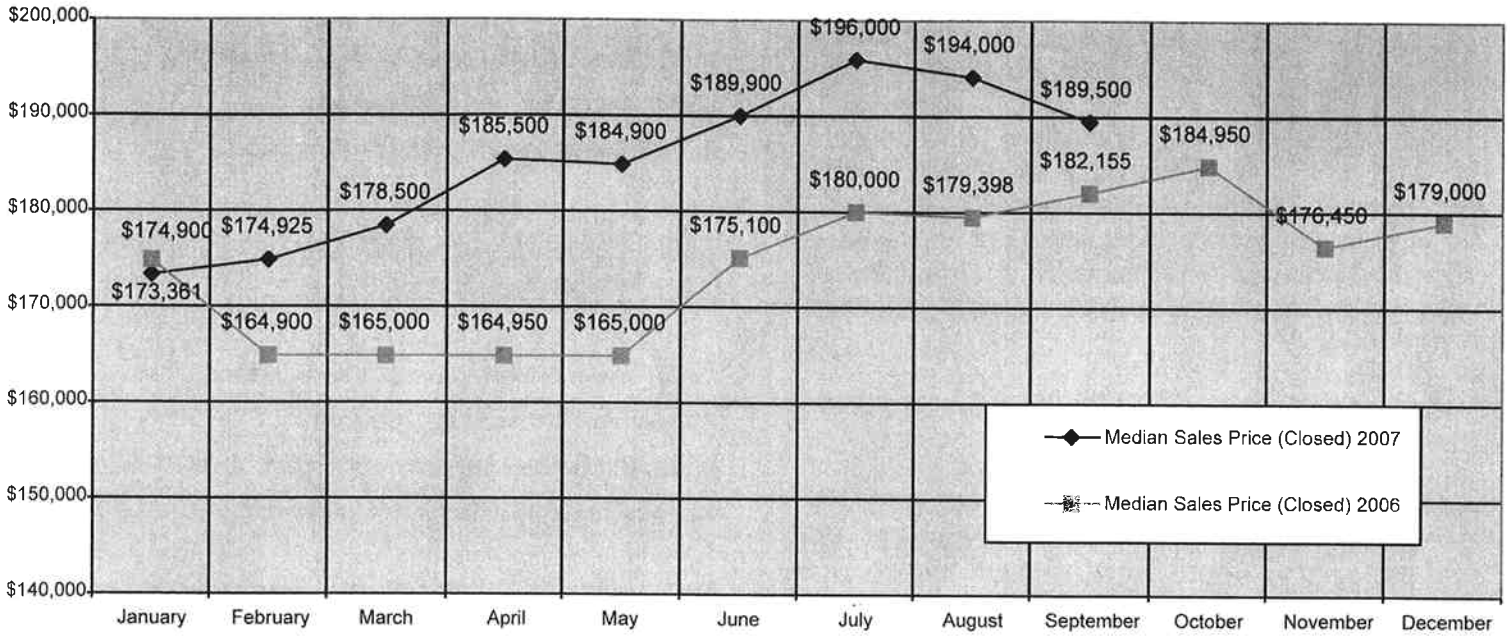
### Average Sale Price



# Market Activity Reports - Spokane County Residential (continued)

Let us know if this information is helpful and what other information would be of value. Send any comments to [Mike@SpokaneRealtor.com](mailto:Mike@SpokaneRealtor.com).

### Median Sales Price



### Active Listings

