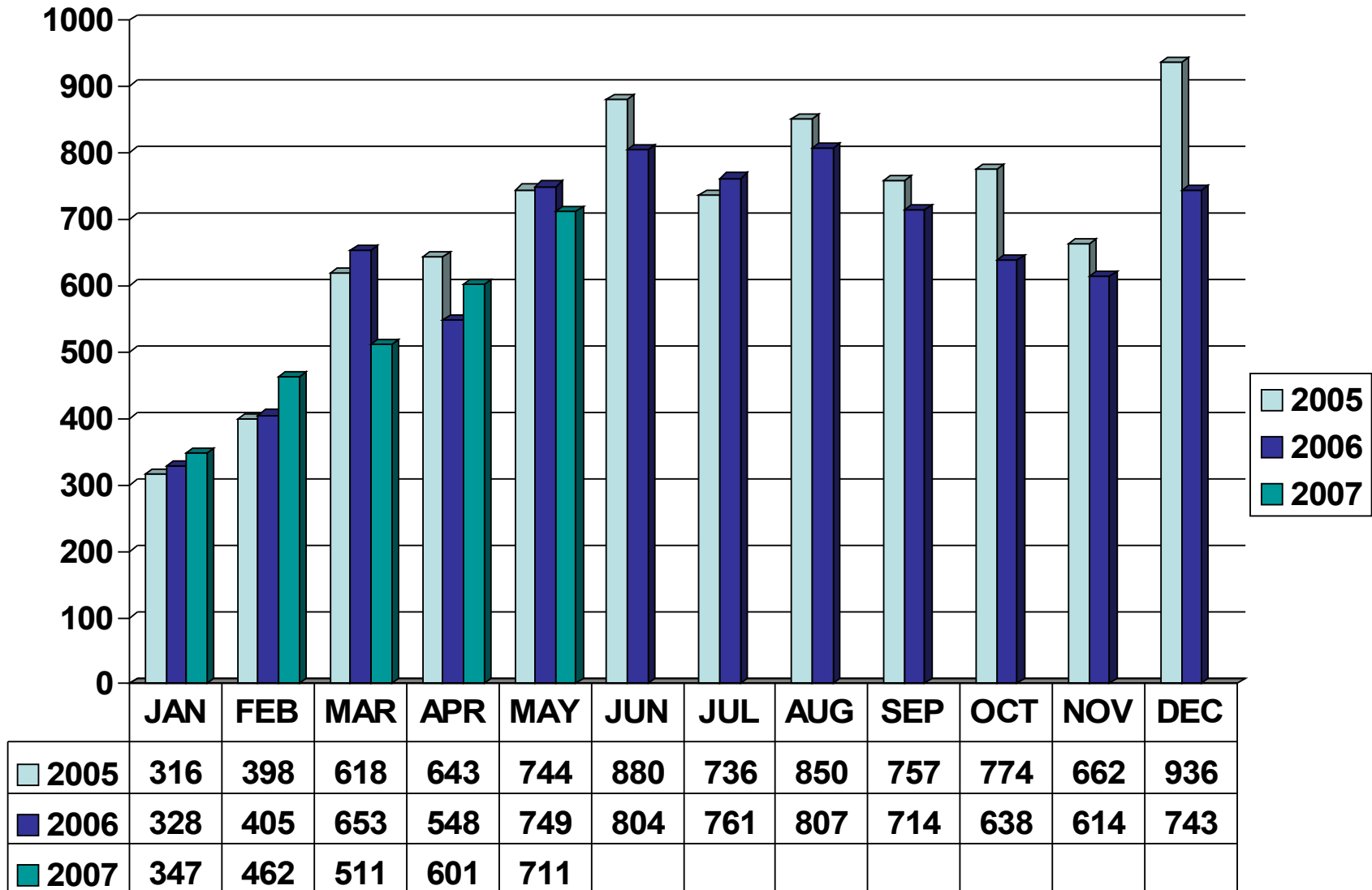
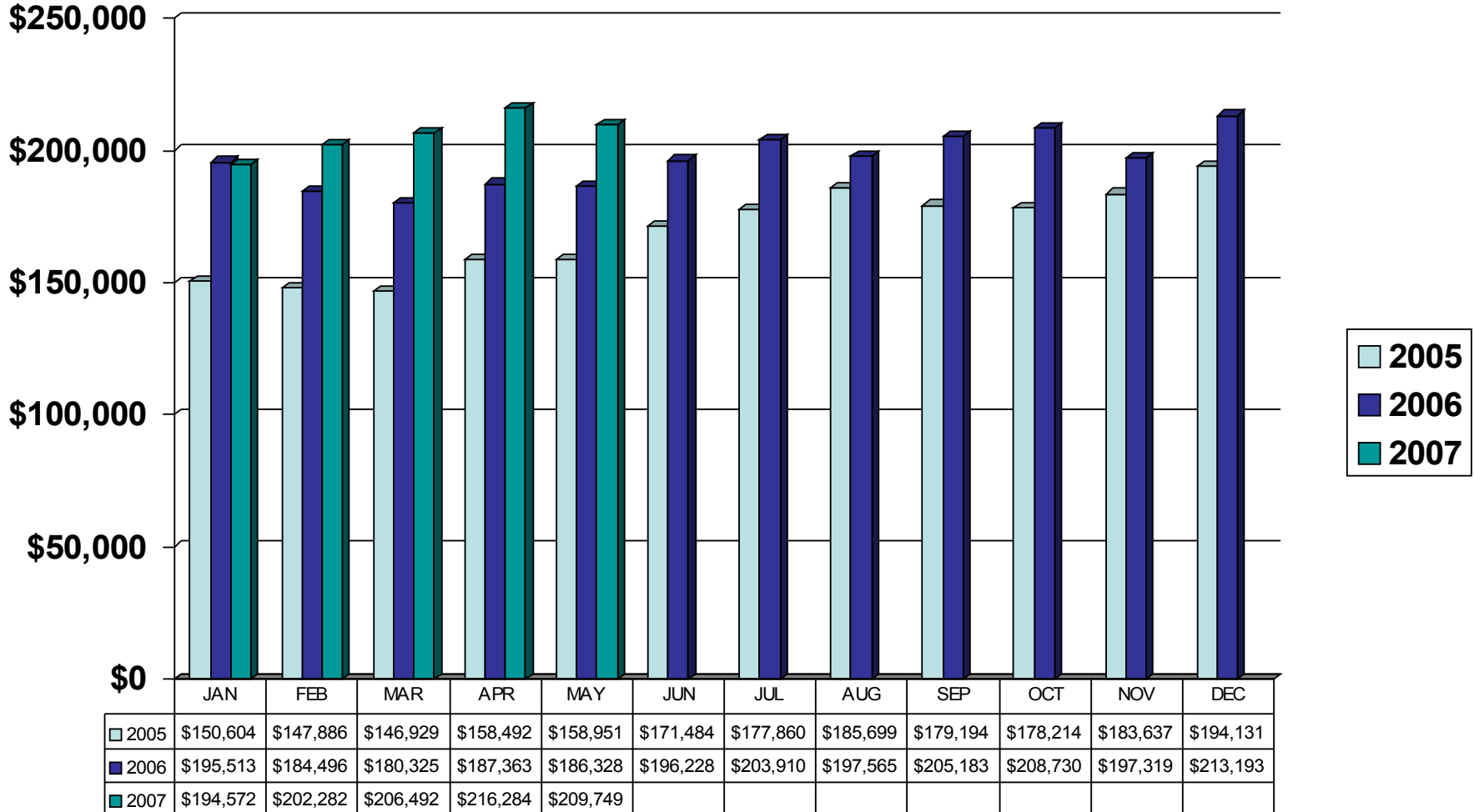


TOTAL HOMES SOLD-Spokane County

(Residential Site Built & Condo on less than 1 acre)

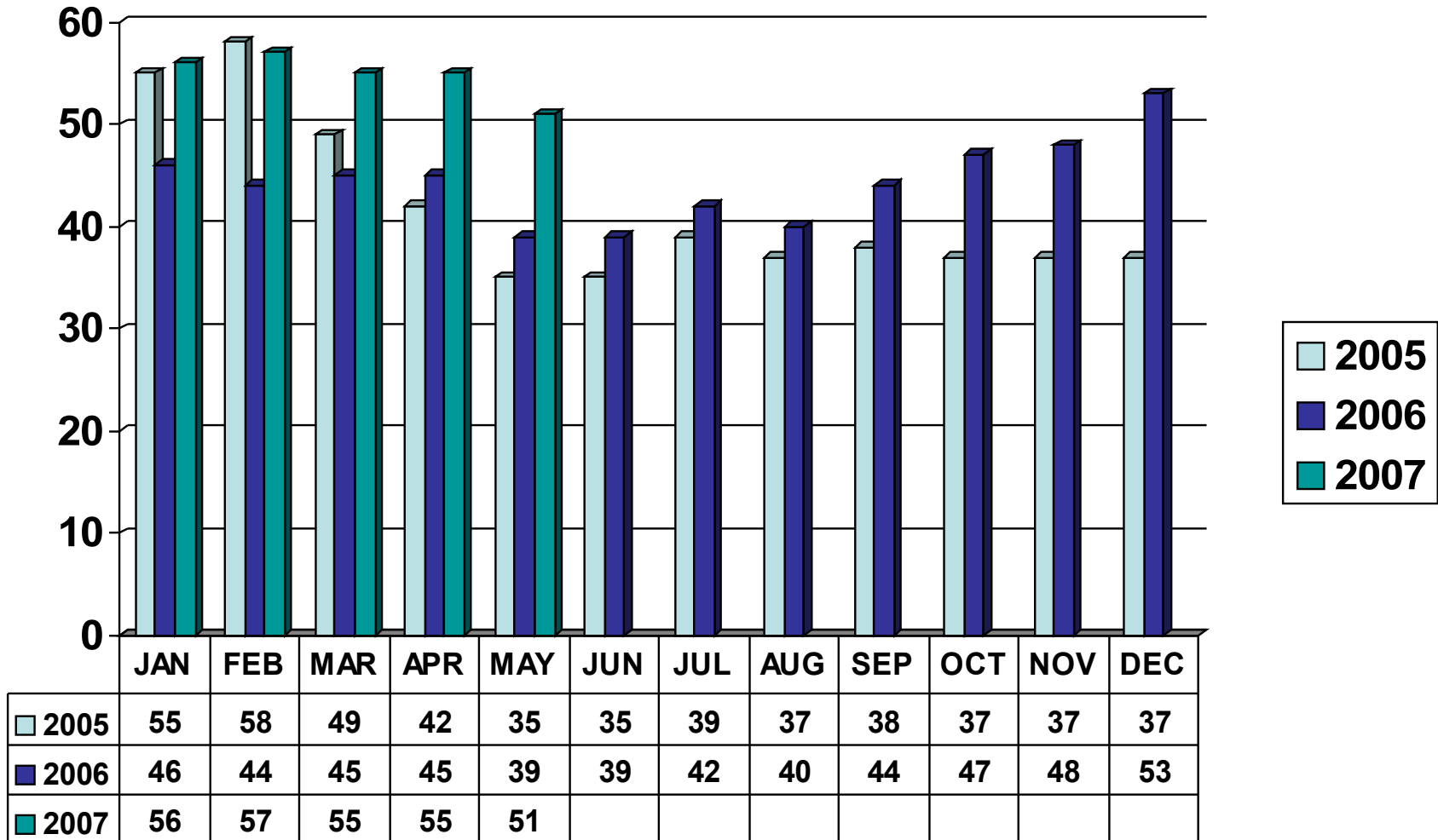


AVERAGE SALES PRICE-Spokane County (Residential Site Built & Condo on less than 1 acre)



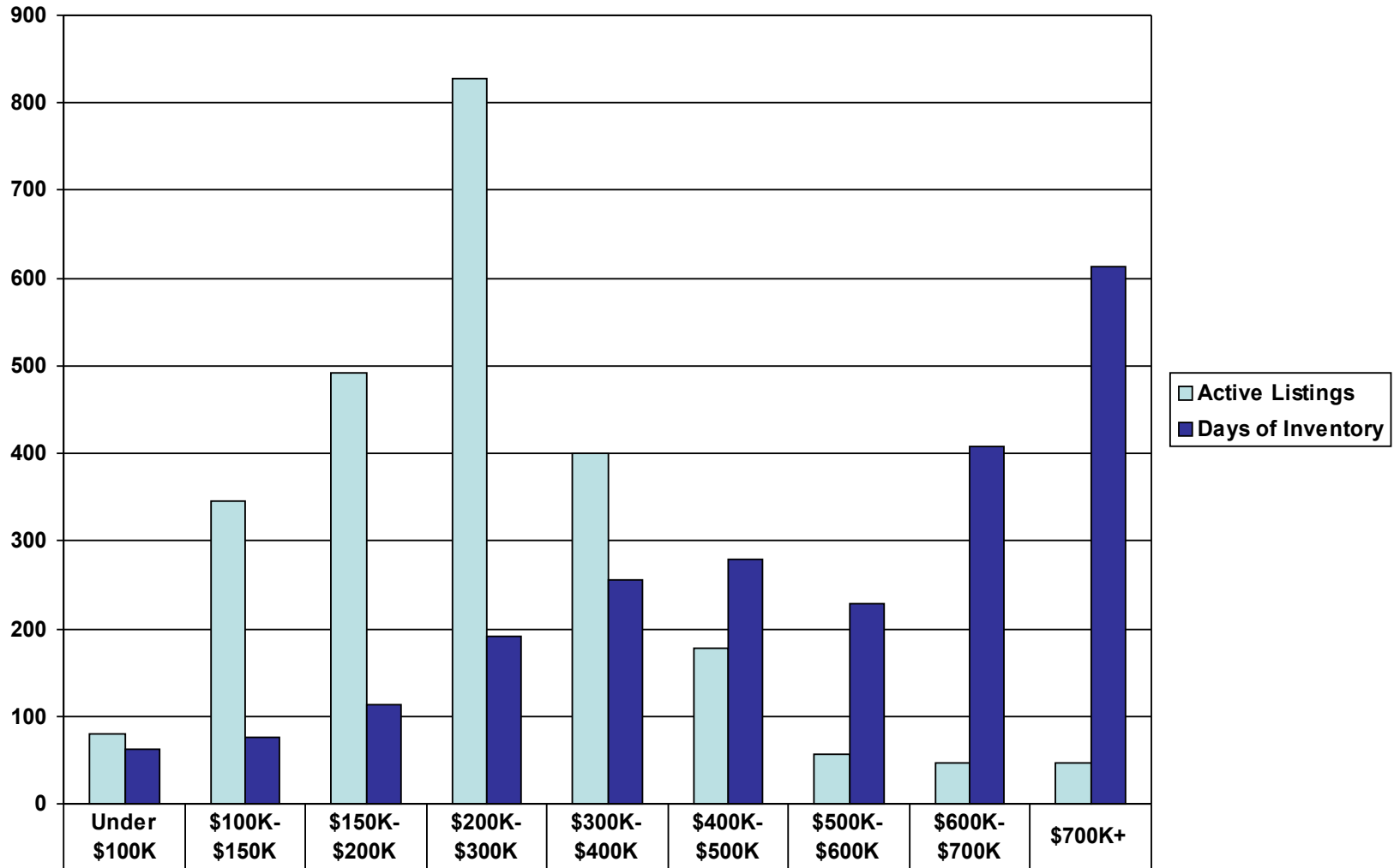
DAYS ON MARKET FOR HOMES SOLD—Spokane County

(Residential Site Built & Condo on less than 1 acre)



DAYS IN INVENTORY (5/31/07)—Spokane County

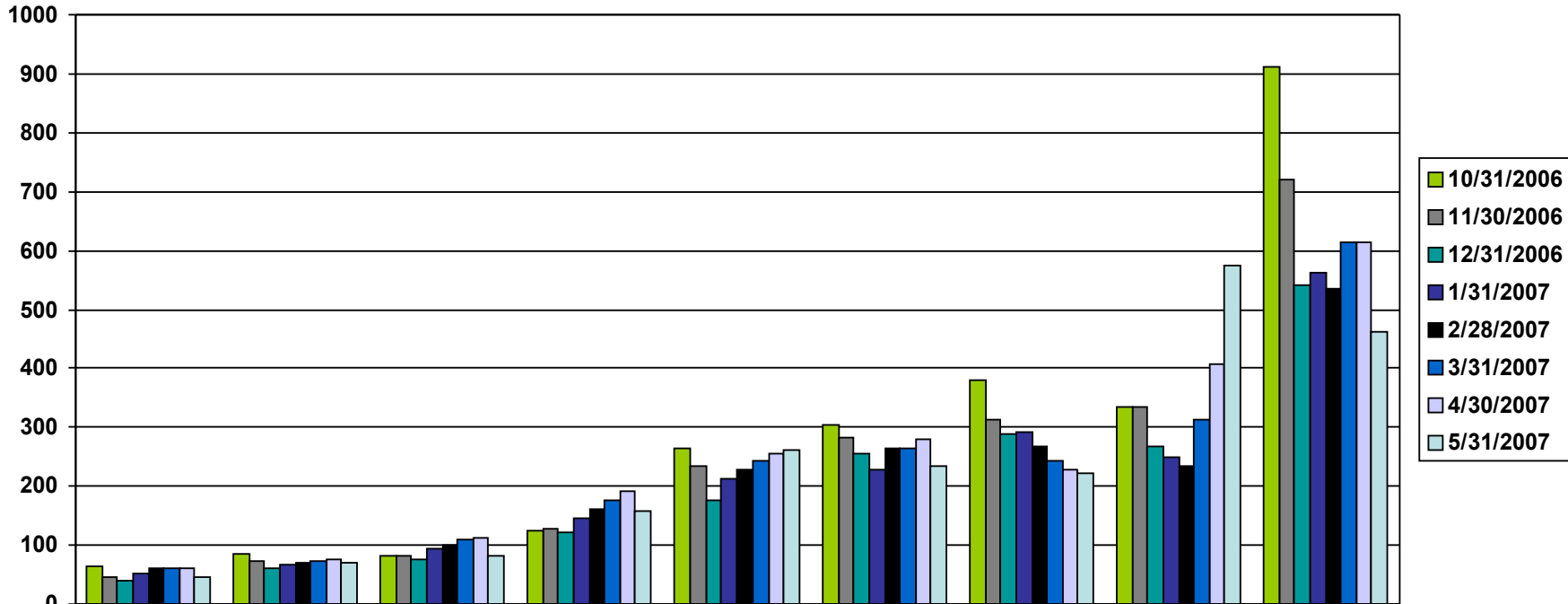
(Residential Site Built & Condo on less than 1 acre)



Active Listings	81	345	491	828	400	178	57	47	47
Days of Inventory	62	77	113	191	256	279	228	408	613

DAYS IN INVENTORY COMPARISON—Spokane County

(Residential Site Built & Condo on less than 1 acre)



	Under \$100K	\$100K-\$150K	\$150K-\$200K	\$200K-\$300K	\$300K-\$400K	\$400K-\$500K	\$500K-\$600K	\$600K-\$700K	\$700K+
10/31/2006	64	85	82	125	264	304	380	334	912
11/30/2006	47	72	82	128	233	282	314	334	721
12/31/2006	39	62	77	122	176	255	289	268	540
1/31/2007	51	68	93	147	212	228	293	249	562
2/28/2007	62	71	99	162	228	265	268	235	534
3/31/2007	60	74	110	175	244	265	244	313	613
4/30/2007	62	77	113	191	256	279	228	408	613
5/31/2007	45	70	83	159	262	233	223	575	462